

# North End of North/South Trail



Land Between The Lakes National Recreation Area

January 2014



The North/South (N/S) Trail spans the entire length of Land Between The Lakes (LBL). The northern portion of the N/S Trail consists mainly

of single track trails meandering from shoreline to heavily wooded ridges. The northern portion has seven springs, three backcountry shelters for overnight camping, and a connector trail to the Nature Station. The trail leads users to scenic remote areas and developed facilities. The trail provides stretches where users walk parallel to Kentucky Lake and sweep into large bottoms offering a sense of solitude. The N/S Trail intersects many of LBL's designated roads allowing for many loop opportunities and access points to hike the trail piece by piece.

The N/S Trail is a multiple-use trail. Bikers and hikers share the northern portion of the trail.

**Length:** North End, 31 miles (58 miles for entire N/S Trail)

**Trailheads:** Golden Pond Visitor Center, North Welcome Station, Jenny Ridge Picnic Area  
(Seasonal Hunting Information available here.)

**Surface Type:** Single Track, Dirt, Gravel, Old Logging Roads

**Difficulty Level:** Easy to Moderate

**Recommended Seasons:** Spring, Fall (During spring months, some portions of trail may be under water.)

**Facilities:** Parking, accessible restrooms, picnic area with grills at Golden Pond Visitor Center and North Welcome Station, Backcountry and Self-Service Fee Areas along N/S Trail

**Trail Markings:** Hiker Trails—White Diamonds ◇

Connector/Springs Trails—Yellow Diamonds ◇

**Trail Ethics:** Pack it in. Pack it out! Share the trail with mountain bikers and hikers.

**Backcountry/Trailside Camping:** Overnight camping is permitted along the N/S Trail. All campsites must be at least 50 feet from the marked trail. Bury all human waste 200 feet from the marked trail. An overnight Backpacking Permit is required; free permits may be obtained at North Welcome Station or Jenny Ridge Picnic Area Trailheads.

**Safety:** *You are responsible for your own safety.* You may encounter a variety of unexpected and/or dangerous conditions. It is your responsibility to be informed and take precautions. Trail users need to look for overhead hazards such as snags, hanging limbs, and leaning/uprooted trees. During windy conditions, please take care to protect yourself. Trail Markers are placed to better orient hikers. Please refer to map for specific location. Protect yourself from Lone Star and American Dog Ticks which thrive in our area. Precautions need to be taken primarily from mid-March to through mid-October. Poison Ivy flourishes in many areas of LBL; please use caution. Properly treat all trailside water before consuming. Springs may not be flowing during July, Aug., & Sept. Plan to bring water with you. Potable water can be found at North Welcome Station, Hillman Ferry Campground, and Golden Pond Visitor Center.

## LBL Trail Rules

1. For your safety, all overnight backpackers are requested to register at either North Welcome Station or Jenny Ridge Picnic Area Trailheads.
2. Low impact camping/hiking/biking techniques should be followed at all times. Stay on the trail, even through wet areas, to help prevent soil erosion. All garbage must be packed out.
3. Mountain biking is discouraged during periods of wet trail conditions.
4. Campfires are permitted in previously used spots except during periods of high fire danger. Only dead or down materials may be used for fuel. The fire should be attended at all times and completely extinguished before departure.
5. Horses and mountain bikes allowed on designated trails only. Motor vehicles strictly prohibited except for approved organized events.
6. *Respect the Resource*—leave plants and flowers for others to enjoy, and do not harass the wildlife!
7. Firearms are strictly prohibited except during established LBL gun hunting seasons by legally licensed hunters with permits.
8. Pets must be on a leash of 6' or less and under physical control at all times. Respect other users.
9. LBL strongly encourages users to "Call Before You Haul" to check current trail conditions at 270-924-2000 or visit us on the web at [www.lbl.org](http://www.lbl.org) under Alerts & Notices.
10. ♻️ Help us eliminate garbage—take your trash to one of the Recycling Stations located at Golden Pond Visitor Center or Woodlands Nature Station.

Land Between The Lakes National Recreation Area has been set aside for your recreation and education. As you explore these trails, take time to enjoy the natural beauty and learn about the natural or cultural history of this special place.



United States  
Department of  
Agriculture

Forest  
Service

USDA Forest Service is an equal opportunity provider and employer.





**Emergencies**

911

**Non-Emergencies**

270-924-2000, 8am-4:30pm M-F  
or 877-861-2457 for  
24-hr Dispatch

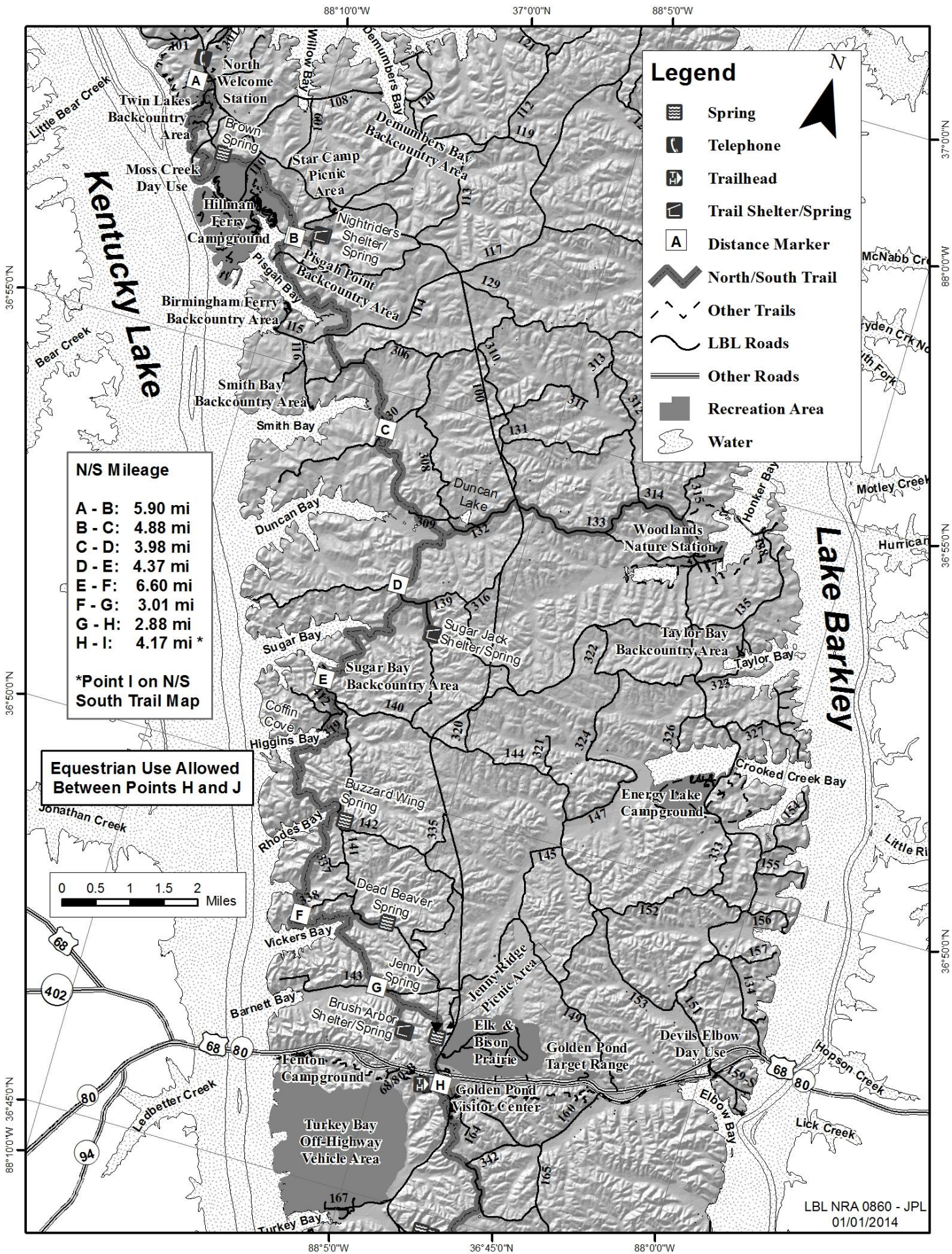
**For More Information**

USDA Forest Service  
Land Between The Lakes  
100 Van Morgan Drive  
Golden Pond, KY 42211  
270-924-2000 or 800-LBL-7077  
[www.lbl.org](http://www.lbl.org)

**Volunteer Opportunities**

“Friends of LBL”  
Volunteer Coordinator  
270-924-2007  
[www.friendsofbl.org](http://www.friendsofbl.org)

# North End of North/South Trail





**Emergencies**

911

**Non-Emergencies**

270-924-2000, 8am-4:30pm M-F  
or 877-861-2457 for  
24-hr Dispatch

**For More Information**

USDA Forest Service  
Land Between The Lakes  
100 Van Morgan Drive  
Golden Pond, KY 42211  
270-924-2000 or 800-LBL-7077  
[www.lbl.org](http://www.lbl.org)

**Volunteer Opportunities**

“Friends of LBL”  
Volunteer Coordinator  
270-924-2007  
[www.friendsoflbl.org](http://www.friendsoflbl.org)

**South End of North/South Trail**

